

2019

LISSON

广州立鑫塑胶有限公司

子母管系列

Dual Chamber
Tube Series

25圆形四孔配亚克力盖

D25 Round 4 Orifices Dual Chamber Tube with Acrylic Cap



挤出花型
Shape Extruded



子母管口
The Orifice of Dual Chamber Tube

內管可装容量: 10-15ml / 外管可装容量: 10-15ml / 总容量: 20-30ml
Capacity:20-30ml (inner:10-15ml/outer:10-15ml)

25子母管(长尖嘴)
D25 Dual Chamber
Tube With Long Nozzle



挤出花型
Shape Extruded



子母管口
The Orifice of Dual Chamber Tube

內管可裝容量: 10-15ml / 外管可裝容量: 10-15ml / 總容量: 20-30ml
Capacity: 20-30ml (inner: 10-15ml/outer: 10-15ml)

D30圆形四孔配磨砂凹顶旋盖

D30 Round 4 Orifices Dual Chamber Tube with Screw Cap



挤出花型
Shape Extruded



子母管口
The Orifice of Dual Chamber Tube

內管可裝容量: 15-20ml / 外管可裝容量: 15-20ml / 總容量: 30-40ml
Capacity: 30-40ml (inner: 15-20ml/outer: 15-20ml)

35圆形七孔配普通旋盖
D35 Round 7 Orifices Dual Chamber
Tube with Screw Cap



挤出花型
Shape Extruded



子母管口
The Orifice of Dual Chamber Tube

內管可裝容量: 20-50ml / 外管可裝容量: 20-50ml / 總容量: 40-100ml
Capacity:40-100ml (inner:20-50ml/outer:20-50ml)

35扇形六孔配亚克力盖

D35 Sector 6 Orifices Dual Chamber Tube with Acrylic Cap



挤出花型
Shape Extruded

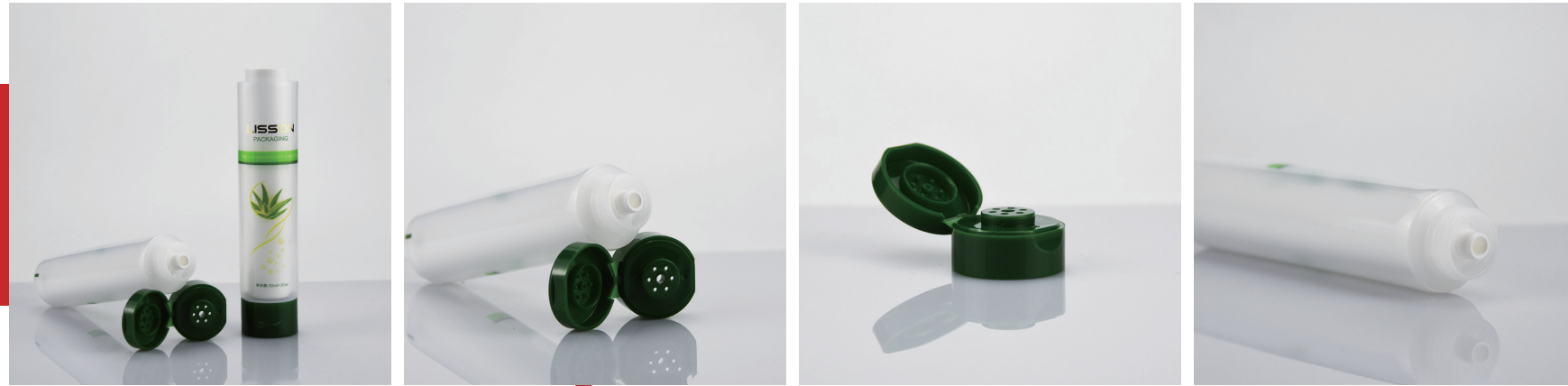


子母管口
The Orifice of Dual Chamber Tube

內管可裝容量: 20-50ml / 外管可裝容量: 20-50ml / 總容量: 40-100ml
Capacity:40-100ml (inner:20-50ml/outer:20-50ml)

35七孔配翻盖

D35 7 Orifices Dual Chamber Tube with Flip Top Cap



挤出花型
Shape Extruded



子母管口
The Orifice of Dual Chamber Tube

內管可裝容量: 20-50ml / 外管可裝容量: 20-50ml / 總容量: 40-100ml
Capacity: 40-100ml (inner: 20-50ml/outer: 20-50ml)

40圆形四孔配亚克力盖

D40 Round 4 Orifices Dual Chamber Tube with Acrylic Cap



挤出花型
Shape Extruded



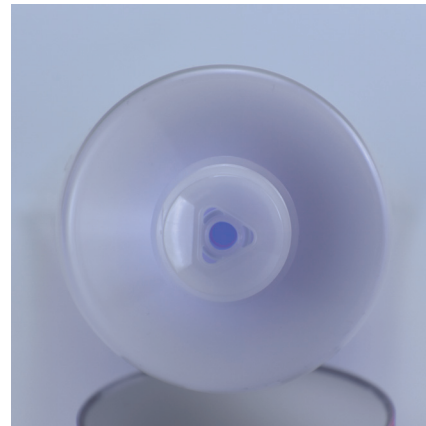
子母管口
The Orifice of Dual Chamber Tube

內管可裝容量: 30-60ml / 外管可裝容量: 30-60ml / 總容量: 60-120ml
Capacity:60-120ml (inner:30-60ml/outer:30-60ml)

50三角形圆孔配普通旋盖
D40 Triangle Orifice Dual
Chamber Tube with Screw Cap



挤出花型
Shape Extruded



子母管口
The Orifice of Dual Chamber Tube

內管可装容量: 50-100ml / 外管可装容量: 50-100ml / 总容量: 100-200ml
Capacity: 100-200ml (inner: 50-100ml/outer: 50-100ml)

50三角形圆孔配大圆头双层盖
D50 Triangle Orifice Dual
Chamber Tube with Screw Cap



挤出花型
Shape Extruded



子母管口
The Orifice of Dual Chamber Tube

內管可装容量: 50-100ml / 外管可装容量: 50-100ml / 总容量: 100-200ml
Capacity: 100-200ml (inner: 50-100ml/outer: 50-100ml)

50七孔配翻盖

D50 7 Orifices Dual Chamber
Tube with Flip Top Cap



挤出花型
Shape Extruded



子母管口
The Orifice of Dual Chamber Tube

內管可裝容量: 50-100ml / 外管可裝容量: 50-100ml / 總容量: 100-200ml
Capacity: 100-200ml (inner: 50-100ml/outer: 50-100ml)

LISSON

专注新·奇·特 高端软管!
Focus on New, Exotic and Special High-end Tubes



中文



EN

更多产品·就在立鑫

More Tube Packaging Information
Please Scanning QuickMark